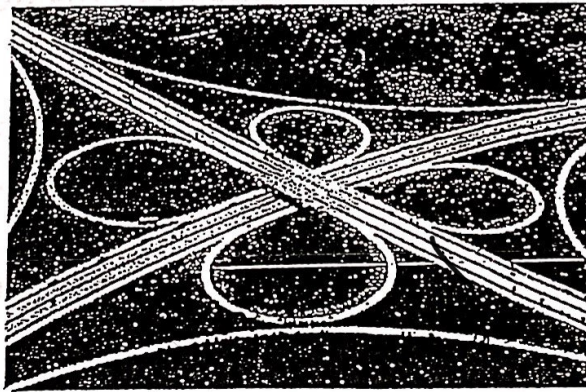
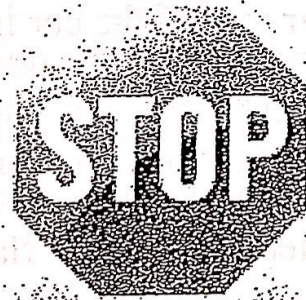
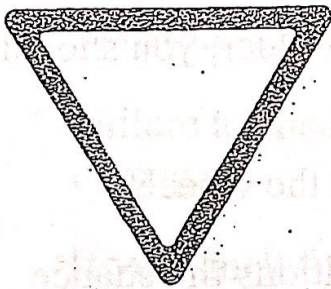


DRIVER EDUCATION



STUDY GUIDE

PLEASE RETURN WHEN TESTING

STUDY SHEET FOR DRIVERS EDUCATION

1. In North Carolina, license-plate lights are required on all cars.
2. To get out of a skid, one should brake gradually and then hold the pedal down, and turn the steering wheel in the direction the rear end of the car is skidding.
3. If your vehicle runs off the road onto the shoulder, you should take your foot off the gas gradually.
4. When changing a flat tire, you should block the wheels.
5. Studies have shown that under normal conditions the chance of a car being involved in an accident on an interstate highway is greater if the driver travels considerably below the posted speed limit.
6. A diamond-shaped traffic sign means slow down and drive with care.
7. You would use your low headlight beams at night in the city or in foggy or misty weather. & rain
8. Roads are likely to be especially slick just after it has begun to rain or drizzle.
9. When driving through heavy fog, you should slow down.
10. A safe driver frequently checks the rear-view and side mirrors.
11. The following statements are false:
 - a. Unless otherwise posted, the speed limit for passenger cars and pickup trucks is 65 MPH.
 - b. The speed limit for a school activity bus is 35 MPH.

← 55 or
School = 45
bus

12. The speed limit inside a city is a 35 MPH unless otherwise posted.
- * 13. Passing on the right is legal on a four-lane highway with two lanes going in each direction and on a one way street.
14. If the wheels lock when you brake, you should release the brake immediately and then brake more lightly.
15. Failure to inspect the exhaust system regularly could result in carbon monoxide poisoning.
16. Failure to check the oil level could result in major engine damage.
17. If you smell fumes while driving your car, you may have a broken exhaust system.
- 4 18. Roughly, one-third of all traffic fatalities involve a drunken person.
19. When the oil light comes on, it means oil pressure is low.
- * 20. The safest method to stop hydroplaning is to ease up on the gas pedal.
21. If you run off the road onto an unpaved shoulder, you should keep your wheels straight and gently slow down.
- * 22. If the rear of your vehicle is skidding to the left, you should steer to the left.
23. Car tires will most likely hydroplane if they are bald.
- * 24. During a heavy rainstorm, friction between a vehicle and the road is reduced most when the tires ride on the water instead of the road.

25. The best way to drive on a slippery surface caused by rain and road oil is to reduce speed.
- X 26. If you must travel in fog, you should use the low beam headlights.
27. If you are driving the day after a heavy snowstorm and the snow has stopped but it is still overcast, your greatest danger is likely to be poor traction.
28. Driving in heavy fog is most dangerous because it causes decreased visibility.
29. When driving at night, you should be sure you can stop within the distance you can see.
30. Narcotics will have the greatest effect on your perception of speed and distance when driving.
31. Driving at high speeds on wet roads may cause hydroplaning because of decreased friction.
- = more damage
32. Increased speed on the force of impact increases the force of impact.
33. One danger of driving in fog is headlight glare.
34. One effect of drinking is that you are likely to think your driving is as good as ever.
35. When driving drunk, a person may think that their years of experience will keep him from having an accident. This confidence is unsound and may be dangerous.
36. Most drivers who have been drinking will take more chances than usual.

37. People often have a drink at a party to avoid being different.
38. Teenagers often drink so that their friends will like them.
39. If you buy food on your way to work or school, you should wait until you get to work or school to eat.
40. If a bee is buzzing around inside the car, you should park the car safely before doing anything about it.
41. If passengers are playing a game that requires reading road signs for certain words, you should pay attention to the road.
42. If you check your blind spots before changing lanes, you can avoid hitting a car beside you.
43. You can cut down on the chance of hitting something in front of you at night if you drive slow enough to stop in the distance you can see.
44. Motorcycle riders are required by law to obey the same traffic laws as automobile drivers.
45. If a passing vehicle has to cut closely in front of you to avoid oncoming traffic, you should slow down and check the shoulder.
46. If a car is passing you on a blind curve, you should slow down if there are no cars behind you.
47. Passing on a blind curve is dangerous mainly because oncoming traffic cannot be seen on curves.
48. A car that has just passed you could most likely cause danger for you if it makes a fast right-hand turn.

49. After passing another vehicle, do not return to the right lane until you can see the passed vehicle in your rear-view mirror and you check the blind spot.
50. The safest time to pass on a two-lane road with no oncoming traffic is when you come to a broken line to your left.
51. If you are behind a slow-moving vehicle in the right lane in a no-passing zone, and there is no oncoming traffic, you should wait until you are out of the no-passing zone in order to pass.
52. You must not try to pass another vehicle on the left when it is making a left turn.
53. It is legal to pass on the right when you are on an expressway with three lanes in one direction.
54. If you are driving in the right lane on an expressway, you should probably move into the left lane when traffic is light and cars are merging onto the expressway from the right.
55. When changing lanes, you can check your blind spot by turning your head and looking over your shoulder.
56. Before moving from the right to the middle lane on a six-lane divided highway, you should check for other vehicles entering the middle lane.
57. For the best view while backing a vehicle in a straight line, you should turn around to the right and look over your shoulder.
58. While backing a car, you should see clearly in the direction your car is moving if you turn your head and shoulders and look backward.

59. You are most likely to be driving in another driver's blind spot when you are passing.
60. To keep a safe space cushion when driving on an expressway and it begins to rain, you should increase the distance between your car and the car in front.
61. When following a vehicle that blocks your view of the road ahead, it is best to follow at a greater distance than usual.
62. When deciding how far away you should be from the vehicle ahead, the most important things to think about are the vehicle's speed, traffic and road conditions.
63. When entering an expressway, you should begin to speed up in the acceleration lane. - *merge lane*
64. If you are on an expressway entrance and notice that there is no traffic on the expressway, continue smoothly onto the expressway.
65. When getting ready to exit from an expressway, you should maintain your speed until reaching the deceleration lane.
66. If there is an expressway entrance just before your exit, you should be ready to change speed so that entering traffic can merge.
67. If you are stopped at a red light and have checked the intersection to see that it is clear of vehicles and people, you may turn right unless a sign tells you not to.
68. At an intersection controlled by four-way stop signs, you should stop and yield to cars that reach the intersection before you.

69. If you come to an intersection with a red light for your lane and you want to go straight and the left -turn-only has a green arrow, you must stop at the intersection and wait until your light turns green.
70. The distance needed to bring a vehicle headed uphill to a stop is generally less than that needed on a level road.
71. A vehicle going down a steep hill becomes harder to stop.
72. If you are driving on a four-lane undivided road going uphill and the speed limit is 50 MPH but you like to drive 45 MPH, you should drive in the right lane at 45 MPH.
73. To make a right turn from a road with two lanes going in one direction, you should generally be in the lane closest to the right curb.
74. From a one-way street, you usually make a left turn from the left curb lane.
75. When going around a downhill curve, your car will gain speed due to gravity.
76. A driver went so fast around a sharp curve that the rear end of the car slid off the road because of centrifugal force.
77. When driving fast around a curve, your car will tend to move to the outside of the curve.
78. The foot brake should be pushed down before putting the car into gear.

79. In order to make a smooth, safe stop, you should apply gradual, firm pressure on the foot brake.
- ★ 80. Before you brake to a stop, you should check the rear-view mirrors.
81. When preparing to stop, you should take your right foot off the gas pedal and apply the foot brake.
82. When preparing to leave an automatic transmission vehicle, the gearshift lever should be in park.
83. The last thing a driver should do when preparing to leave a car is to remove the key.
84. The inside rear-view mirror should be adjusted to show the center of the road behind the vehicle.
- ★ 85. Your safety belts should be fastened after you adjust the seat.
86. After you start the engine but before you put a vehicle in motion, you should check all information gauges.
87. When starting a vehicle, the gearshift selector should be in park.
88. When moving forward, the automatic gearshift selector usually should be in drive.
- ★ 89. You should use your turn signal when you are entering traffic from a parking position.
90. When making a right turn, you should signal approximately one-half city block before the turn.

91. After making a right turn at an intersection, you should adjust your speed to the flow of traffic in the right lane.
92. When waiting at an intersection to make a left turn, you should keep your wheels pointed straight ahead until you can complete the turn.
93. Before turning left, it is important to yield to oncoming vehicles.
94. To maintain an even speed while going up a hill, you have to increase pressure on the gas pedal.
95. The steeper the hill, the more engine power will be needed for a vehicle to overcome the effects of gravity.
96. When approaching a curve, you should slow down before entering the curve.
97. When rounding a curve, you should control the speed of the vehicle in order to reduce the effect of natural forces.
98. When approaching a sharp curve that has no posted speed, you should reduce speed.
99. If you come to an intersection with a flashing yellow light, you should drive carefully through the intersection.
100. If you come to an intersection with a flashing red light, you must stop at the intersection, then proceed as traffic allows.
101. If a traffic officer waves you on at an intersection when the traffic light is red, you should follow the directions of the officer.
102. If a police officer directs you to turn right even though you have signaled for a left turn, the best thing to do is turn right as directed.

103. If you come to an intersection where a crossing guard is helping children across the street, you should stop.
104. When entering an expressway behind several vehicles, it is most important to adjust the position and speed of your vehicle to the flow of traffic.
105. The first thing to do if the vehicle in front of you signals or or flashes its brake lights is to slow down.
106. When driving at night, you should adjust the space cushion around your car by staying farther behind the car in front.
107. If you find yourself driving in another driver's blind spot, you should move out of it as soon as it is safe.
108. Because another driver might move into your lane suddenly without seeing your car, you should always adjust your speed or lane position to get out of a blind spot.
- * 109. If someone delivers 1000 pounds of tomatoes to the Farmer's Market, his stopping distance when he gets home with an empty truck should be shorter.
110. If a weaving vehicle is following you too closely, you should keep to the right, slow down, and pull off the road if necessary.
111. To avoid being hit in the rear by another car, you should check your rear-view mirrors often.
112. When you decide to pass on a two-lane road, you should judge how much distance you have for safely passing.
- * 113. The first thing you should do before deciding to pass on a two-lane road is make sure it is legal and the left lane is clear of oncoming traffic.

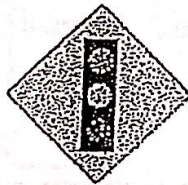
114. When deciding to pass another vehicle or to change lanes, a proper communication is to use the turn signal.
- ★ 115. Changing lanes and passing cars are similar tasks because the driver's view is easily blocked.
116. To steer the car while moving backward, you should turn the top of the steering wheel in the direction you want the rear of the car to go.
117. If you are driving on a four-lane undivided highway and a school bus going in the other direction has stopped and is picking up children, you should stop and wait until the bus starts or turns off its flashers.
118. You must not try to pass on the right when the car in front of you is signaling for a right turn.
119. When you are behind a school bus that has stopped outside city limits to pick up children, you must stop and wait until the bus starts or turns off its flashers.
120. If you ^{Pass} overtake a school bus in motion, it is safest to pass if the road is clear of oncoming traffic.
121. If you pull as far off the right shoulder as possible to change a tire, you should turn on the emergency flasher lights.
122. If you have trouble judging distances, you should leave a greater distance between you and the vehicle ahead.
- ★ 123. To reduce the effects of headlight glare at night, you should look to the right edge of the road.
124. If you have poor night vision, you should avoid driving at night.

125. If children are playing on the sidewalk a half block ahead of you, you will notice them in time to slow down if you are in the habit of moving your eyes from side to side.
126. If you feel nervous and rushed, it is best to avoid driving unless you can pay careful attention to the road.
127. If someone has just spent the afternoon visiting friends and all he can think about is his social life, he should pay special attention to road conditions and his driving.
128. Driving with one headlight presents a very high risk of danger during night driving.
129. Alcohol affects the body by putting the brain to sleep.
130. Having just one or two drinks before driving affects your reaction time and judgment.
131. The brain is the first organ of the body affected by alcohol.
132. Your social groups can determine whether or not you drink alcohol.
133. If you take a breath test, you will be asked to blow into a machine.
- * 134. If you are arrested for driving while impaired, the implied consent law requires you to take a blood alcohol test.
135. A medical professional must administer a blood test for alcohol.
136. Marijuana has the greatest effect on vision, hearing, taste and smell.
137. The greatest risk for driving after using marijuana is the perception of speed and distance.

138. In order to make your headlights work best, you should clean them regularly.
139. The greatest responsibility drivers have is to do whatever they can to cut down the chances of accidents or injuries.
140. One of the dangers of expressway driving is sleepiness caused by driving the same speed for long periods.
141. More distractions from lights, signs, and pedestrians make city driving more dangerous than expressway driving.
142. City driving is more dangerous than expressway driving because of the cross traffic and pedestrians.
143. The type of tires on a vehicle has the greatest effect on road friction.
144. If you come to a large snowdrift on an expressway, it is best to avoid it if possible.
145. When preparing to drive up a snow-or ice-covered hill, you should apply slight pressure to the gas pedal while climbing.
146. If you want to stop or slow down gradually while driving on ice, you should use light and steady pressure on brakes.
147. Immediately after driving through a deep puddle of water, you should gently apply the brakes to make sure they work.
148. When the engine is running and the alternator light is on, it is most likely that the alternator is not providing enough current.
149. If the temperature light is on, you should stop at the first safe opportunity and let the engine cool. ^{electrical}
150. If your oil light comes on, you should shut off the engine and check the oil level.

151. When the brake system warning light stays on after you have shifted to drive, you should first check to make sure the parking brake is released.
152. If your engine stalls at a red traffic signal, you should turn on your flashers, shift to park and try to restart the engine.
153. When a driver has a total of 7 points, he may have 3 points deducted if he satisfactorily completes a Driver Improvement Clinic.
154. Passing a stopped school bus unloading children carries the highest number of points.
155. Conviction for reckless driving does not automatically result in a loss of license.
156. A driver will lose his license if he is convicted of speeding more than 70 MPH in a 55 MPH zone.
157. A bicycle rider is likely to be seriously injured in almost any collision with a car.
158. Motorcycles are particularly dangerous because they are more difficult to see than cars and they give the rider little protection if there is an accident.
159. You should move no more than 10 MPH when backing your car.
160. Highway accidents occur most frequently at intersections.
161. If you come to an unmarked intersection where it is hard to see in all directions because of trees or buildings, you should stop at the intersection and move forward slowly.
162. The most frequent type of accident on interstate highways is rear-end collisions.

163. If you are driving on an interstate highway when a breakdown forces you to the shoulder, you should raise the hood and tie a white handkerchief to the left door handle.
164. If you flood your engine while trying to start your car, you should turn on the ignition and at the same time hold the gas pedal down.
165. When hauling a heavy load, you should allow more distance for stopping.
166. Overloading a car may result in longer stopping distance and damage to the car's transmission and tires.
167. When starting your car and pulling away in snow, you should increase your speed slowly.
168. The best way to get good traction on hard packed snow is to put chains on your tires.
169. When driving in a heavy snowstorm during the day, you should use your low-beam headlights.
170. A diamond-shaped traffic sign would be used to warn drivers of a deer crossing.



Signal Ahead



Merging Traffic



Lane Drop



Divided Highway



Cattle Crossing



Deer Crossing



Low Clearance



Right Turn



Curve Right



Farm Machinery



Side Road



Divided Highway Ends



Two Way Traffic



Hill



Slippery When Wet



Bike Crossing



Side Road



Cross Road



Winding Road



Stop Ahead



School



School Crossing



Railroad Crossing

ONLINE SERVICES

Click & DMV

New

Driving Records
Pin Administration

Commercial Carriers
IRP Renewal

Drivers
Duplicate License/ID
Card

Insurance
Liability Insurance
Liability Insurance
(FS-577)

License Plates
Personalized Plates
Specialized Plates

Vehicles
Duplicate Registration
Registration Renewal

HOT TOPICS

No More Sticker!
New Electronic
Inspection Program
Vehicle Insurance
Coverage Lapses:
Cost More July 1

DMV Requires U.S.DOT
Number

License Plate Agency
Application Form

Motorcycle Helmet Law
Antique / Custom-Built

Replacing Licenses

Fees For DMV

Identity Theft

License Suspension

DRIVER SERVICES | VEHICLE SERVICES | OTHER SERVICES | MOVING? | FORMS | OFFICE LOCATIONS

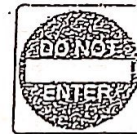
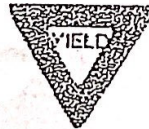
DRIVER SERVICES > Driver's Handbook > Chapter 5

Chapter 5: Regulatory Signs

[Previous Section](#)

[Handbook Table of Contents](#)

[Next Section](#)



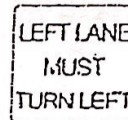
No Bicycles



Left Turn Only



Thru & Left



LEFT LANE
MUST
TURN LEFT



No Left Turn



ONE
WAY



Keep Left



Keep Right



No Right Turn



NO
TURNS



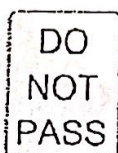
No U Turns



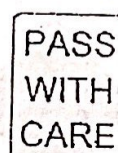
Double Left Turns



KEEP
OFF
MEDIAN



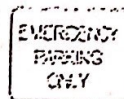
DO
NOT
PASS



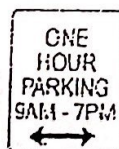
PASS
WITH
CARE



SLOWER
TRAFFIC
KEEP
RIGHT



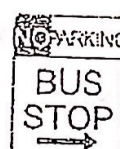
EMERGENCY
PARKING
ONLY



ONE
HOUR
PARKING
9AM - 7PM



RESERVED
PARKING



BUS
STOP



ONE WAY

ATTENTION!
**READY, SET
RENEW**

Central Issuance of
Driver Licenses
Lillington Pilot Project

Did You Know?



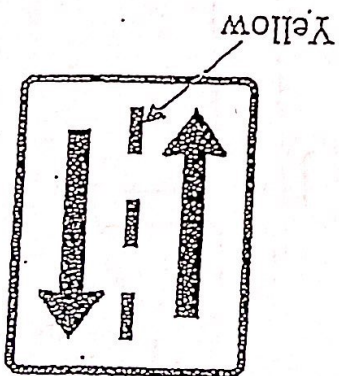
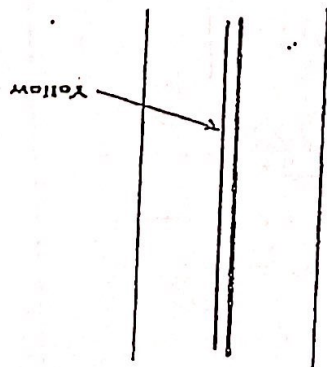
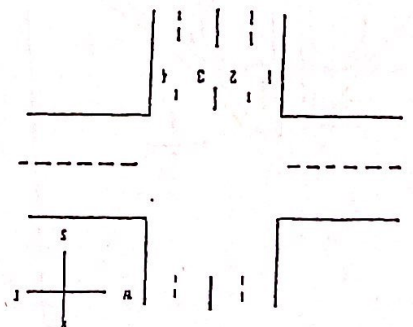
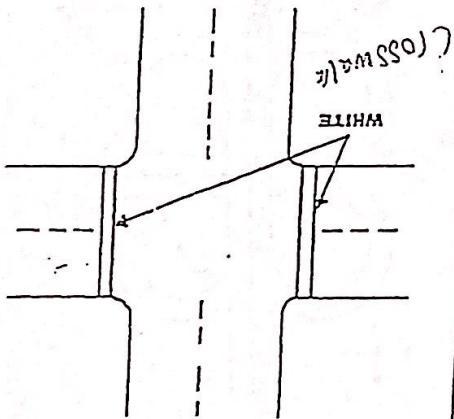
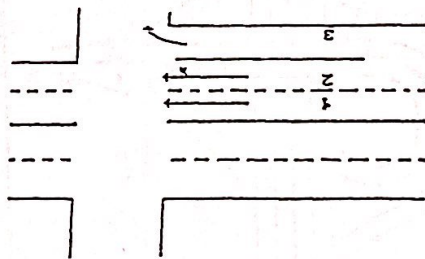
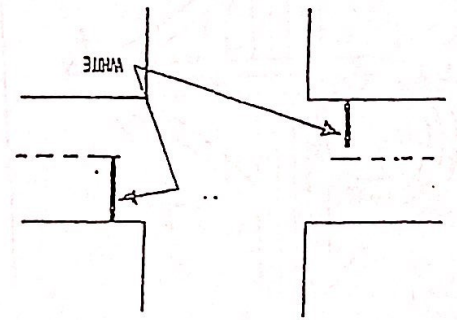
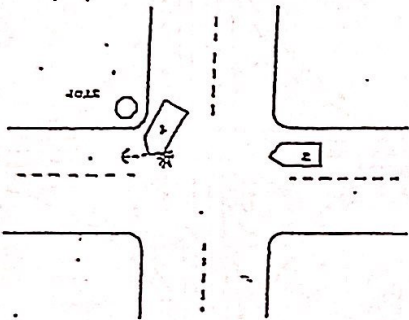
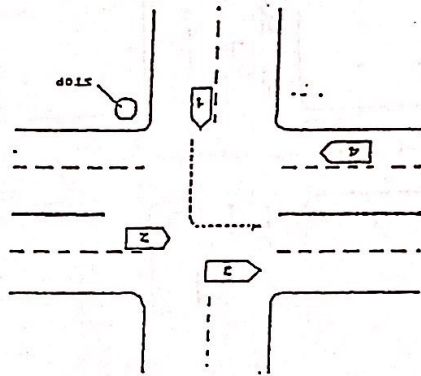
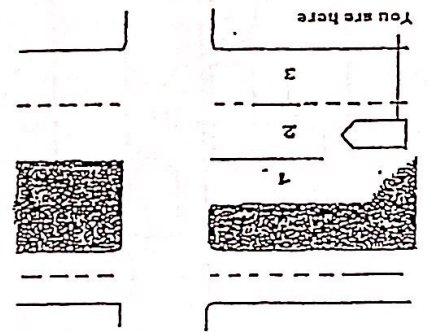
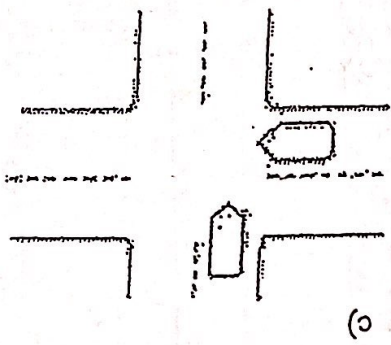
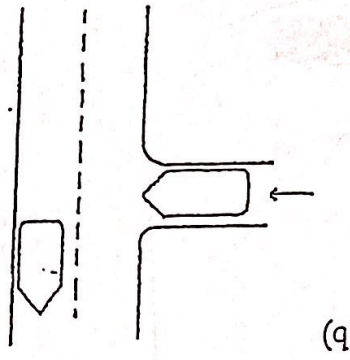
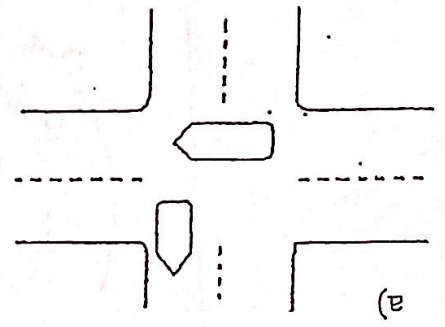
You can renew your
driver license up to
6 months prior to
the expiration date.

Habla Español?

[Manual de Manejo
de Carolina del
Norte](#)



The North Carolina
Department of
Transportation



d)

